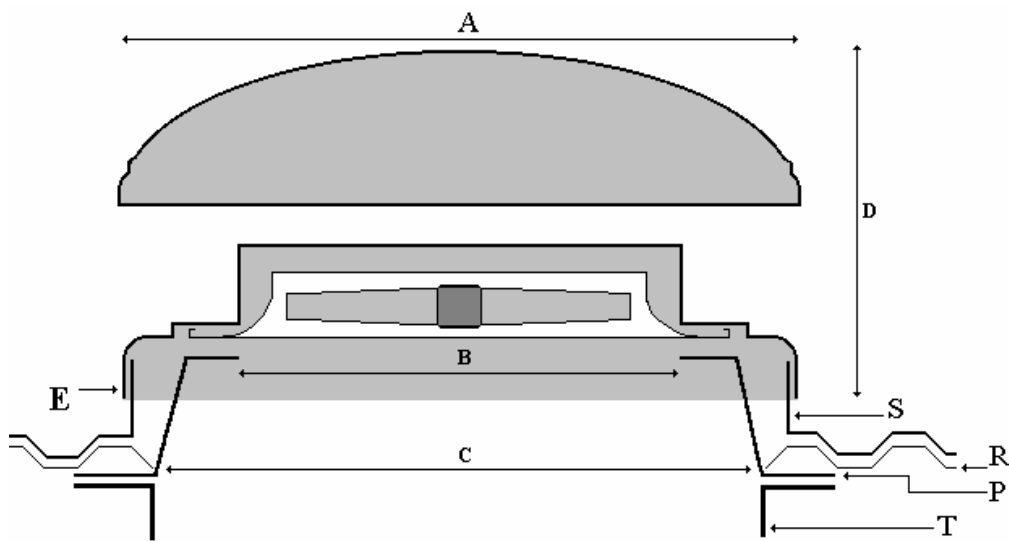


# Weatherform Ltd: Roof mounted terminals

## ROOF MOUNTED AXIAL FAN INSTALLATION DETAILS / DIMENSIONS



P= Purlin Box  
 R= Roof Profile  
 S= Soaker Sheet  
 T= RSA Trimmer

UNIT REF	A Weather Cowl sq	B Purlin box Aperture	C Purlin box base/ Roof aperture	D Unit height	E Weatherskirt Base sq	S Soaker sheet Kerb - Sq	Weight Kg **
RA250	490	310	480	270	460/490	440	4.25
RA315	555	350	515	340	520/555	510	6.5
RA350	675	400	680	380	660/695	640	8.5
RA400	765	510	780	460	755/795	750	12
RA450	765	510	780	460	755/795	750	12
RA500	995	620	910	550	920/960	890	21
RA560	995	620	910	550	920/960	890	21
RA630	1115	780	950	650	1010/1055	1000	27
RA710	1115	780	950	650	1010/1055	1000	27
RA800	1410	910	1150	750	1125/1170	1130	34
RA1000	1630	1140	1390	900	1370/1405	1370	45

\*All dimensions indicated are nominal and subject to design change. The right to alter specification is reserved.

\*\* Owing to the hand lay process, all weights are indicative and subject to variation.

©Weatherform Ltd 2007